

# Accessories & Solutions

for professional installation

**Adapter plates, e.g., for mounting rail systems with bottom or side screw channel onto the S-5!® clamps with M8 thread.**

## Adapter Plate V2A

- Material: 5mm Stainless Steel A2
- Length: 80mm, Width: 30mm
- Rundloch: M11, Langloch: 40mm x 11mm
- Packaging unit: 100 pieces per box

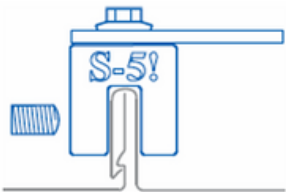


## Angle- / L-Adapter Alu

- Material: 6.25mm Aluminum (EN AW 6036 T6)
- Legs: 38mm and 58mm long, 40mm wide
- 2 M9-Langlöcher 20mm + 40mm
- Packaging unit: 100 pieces per box



**If an M8x16 stainless steel screw with serrated locking teeth is used for mounting in the upper M8 thread of the S-5! clamp, it must be tightened to a torque of 18 Nm. The respective mounting instructions must be observed for all applications and mounting with S-5!® clamps.**



E-Mini



S-Mini



Z-Mini



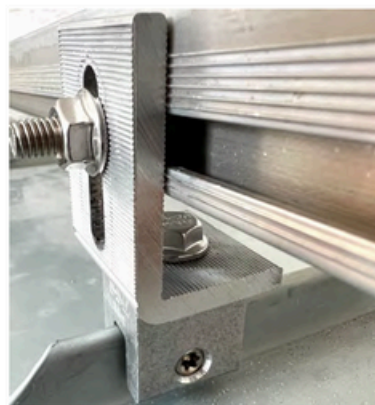
N-Mini



N1.5-Mini



R465-Mini



The suitability for the intended purpose is verified by the planner and user. The material properties of the assembled metals and their combination with each other must be checked and observed beforehand. We assume no liability for defects and damages resulting from failure to follow our assembly instructions, from the installation or assembly of our products with competitor components, or from the use and combination of other components not purchased from us. Warranty is excluded in this respect. RoofTech GmbH, S-5!® - Metal Roof Innovations Ltd., and the other manufacturers of our distributed products generally assume no responsibility for the installation, suitability, and applications, nor any further liability.



📍 Benzstrasse 21

71101 Schönaich, Germany

☎ +49703176965-20

✉ office@rooftech.de

🌐 www.rooftech.de