

The right way to attach almost anything to metal roofs!

S-5![®]

The Right Way![®]

S-5-K Grip Clamp

The S-5-K Grip clamp was specifically developed to fit Klip-Rib[®] and other bulb snap-together seams. The design utilizes multiple inserts (sold separately) in order to accommodate a variety of bulb snap-together profiles. Each insert has a unique shape that allows for a tight fit and provides increased holding strength over other attachment options.

The S-5-K Grip also eliminates the large moment arm other clamps use for these profiles. Instead, it features a low mounting surface area, with the mounting bolt directly over the center of the seam. This dramatically increases the strength of the clamp, making it perfect for use with heavy-duty applications.

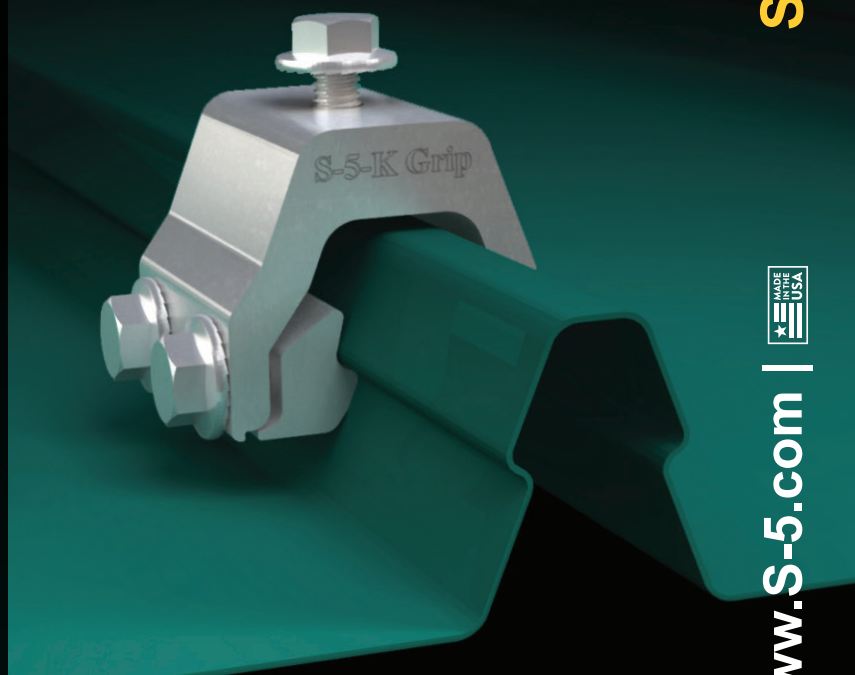
The head of the flanged bolts control the amount of compression, which reduces the possibility of over-compressing the seam, and makes installation a snap!

Just place the clamp on the seam, position the insert piece, and tighten the flanged bolts at the base. Then, affix ancillary items using the top bolt provided. Go to: www.S-5.com/tools for information about properly attaching S-5![®] clamps.

S-5-K Grip Mini Clamp

The S-5-K Grip Mini is a bit shorter than the S-5-K Grip and has one base bolt rather than two. The mini is the choice for attaching all kinds of rooftop accessories: signs, walkways, satellite dishes, antennas, rooftop lighting, lightning protection systems, solar arrays, exhaust stack bracing, conduit, condensate lines, mechanical equipment—just about anything!*

*S-5! mini clamps are not compatible with, and should not be used with, S-5! SnoRail™/SnoFence™ or ColorGard[®] snow retention systems.



The S-5-K Grip was specifically developed to fit Klip-Rib[®] and other bulb snap-together seams.

S-5-K Grip and S-5-K Grip Mini



888-825-3432 | www.S-5.com |

S-5!®

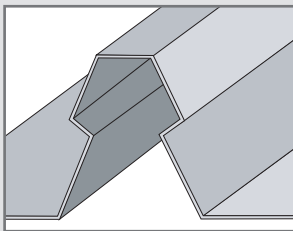
The Right Way!®

The S-5-K Grip™ eliminates the large moment arm and features a low mounting surface area with the mounting bolt directly over the center of the seam, which dramatically increases the strength of the clamp.

The **S-5-K Grip** and **S-5-K Grip Mini** clamps are each furnished with the hardware shown to the right. A structural aluminum attachment clamp, the S-5-K Grip is compatible with most common metal roofing materials excluding copper. All included hardware is stainless steel. Please visit www.S-5.com for more information including CAD details, metallurgical compatibilities, and specifications.

The S-5-K Grip clamp has been tested for load-to-failure results on a variety of standing seam roof profiles from leading panel manufacturers. The independent lab test reports found on our website at www.S-5.com prove that S-5!® holding strength is unmatched in the industry.

Example Profile



Profiles

S-5-GX 10 or S-5-GX 10 Mini

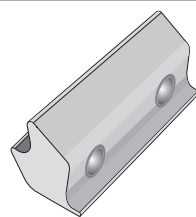
- LYSAGHT KLIP-LOK® 406
- McElroy Metal Mirage
- AEP Span Klip-Rib®
- Metal Sales Clip-Loc
- SpeedDeck® SpeedDeck®
- Safintra Saflok 410
- Safintra Saflok 700
- And other similar profiles

S-5-GX 50 or S-5-GX 50 Mini

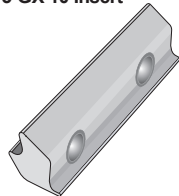
- LYSAGHT KLIP-LOK Classic® 700
- LYSAGHT KLIP-LOK 700 Hi-Strength®
- Stramit Speed Deck Ultra®
- Fielders KingKlip® 700
- And other similar profiles

If you have a profile not listed here, please contact S-5! to request a sample for test

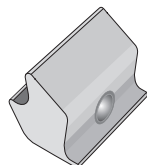
Insert Options



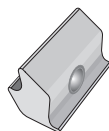
S-5-GX 10 Insert



S-5-GX 50 Insert



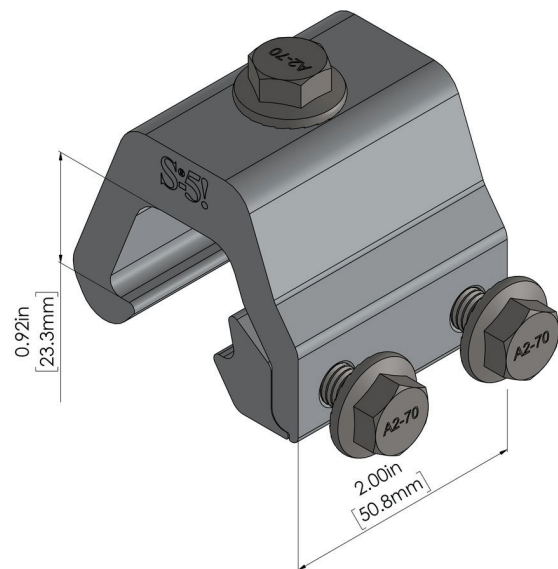
S-5-GXM 10 Mini Insert



S-5-GXM 50 Mini Insert

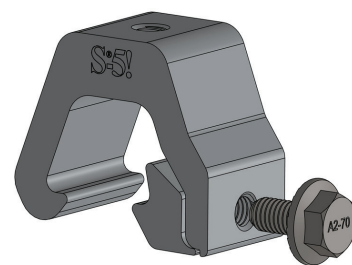
S-5-K Grip

(With S-5-GX 10 Insert)



S-5-K Grip Mini

(With S-5-GX 10 Mini Insert)



S-5!® Warning! Please use this product responsibly!

Please note: All measurements are rounded to the second decimal place.

Products are protected by multiple U.S. and foreign patents. For published data regarding holding strength, fastener torque, patents, and trademarks, visit the S-5! website at www.S-5.com.

Copyright 2021, Metal Roof Innovations, Ltd.
S-5! aggressively protects its patents, trademarks and copyrights. Version 081321..

The K-Grip-Clamp and K-Grip-Mini are not on the RoofTech stock available but can be shipped from S-5!, USA, after customer request – even in small quantities and in short time with air freight. Please call us for quote

RoofTech GmbH Benzstraße 21

Phone: +49 (0) 7031 769652-0

71101 Schönaich, Germany Email: office@rooftech.de www.rooftech.de



No liability for printing errors. Technical changes subject to modification. © Copyright RoofTech GmbH 2023. All rights reserved.